



TOYOTA C-HR





Don't just take to the streets – own them. Turn corners, turn heads, turn up. Your attitude is mirrored by your car: stand-out style with inner confidence that pushes away convention. The already iconic Toyota C-HR, with its striking looks and unconventional spirit, is now your ideal counterpart. So step inside the lush interior, grab the wheel and power towards your new adventure. With the new Toyota C-HR, you'll satisfy your need for more and own your future.



**LEAVE  
ORDINARY  
BEHIND**



# TIME TO WAKE UP THE CITY

In a world full of ordinary: stand out. Disrupt convention, throw away the rule book and trust in the value of the extraordinary. The new Toyota C-HR embodies just this. It's a modern coupé with an angular design which shouts dynamism and a compact silhouette that embodies urban mobility; yet it's coupled with a wide stance, formidable power and unforgiving ability – an uncompromising ode to the SUV. So aspire to be great, live to be yourself and enjoy life's adventures.







# INSTANT POWER, SEAMLESS HYBRID PERFORMANCE

If life is a journey that needs to be driven the new Toyota C-HR is your passport to adventures yet to be discovered. Engaging, dynamic and exceptionally efficient, with instant acceleration that makes overtaking a breeze, and a commanding drive that can conquer any road – the Toyota C-HR is eager and ready to go. Welcome to the next level Hybrid experience.





## THE ROAD IS YOURS

Smooth, efficient and even more economical, the new Toyota C-HR is now available with a choice of two self-charging Hybrid powertrains. With outstanding performance from the new 2.0 litre Hybrid Dynamic Force powertrain, it threads through city streets, powers along motorways, defying convention at every opportunity.

### Specifications

#### HYBRID

##### 2.0 L PETROL HYBRID E-CVT

Power **184 DIN hp**

Fuel consumption\* **5.2–5.7 l/100 km**

CO<sub>2</sub> emissions\* **119–128 g/km**

0–100 km/h **8.2 seconds**

#### HYBRID

##### 1.8 L PETROL HYBRID E-CVT

Power **122 DIN hp**

Fuel consumption\* **4.8–5.2 l/100 km**

CO<sub>2</sub> emissions\* **109–118 g/km**

0–100 km/h **11.0 seconds**

#### PETROL

##### 1.2 L TURBO PETROL 6 M/T

Power **116 DIN hp**

Fuel consumption\* **6.8–7.1 l/100 km**

CO<sub>2</sub> emissions\* **154–161 g/km**

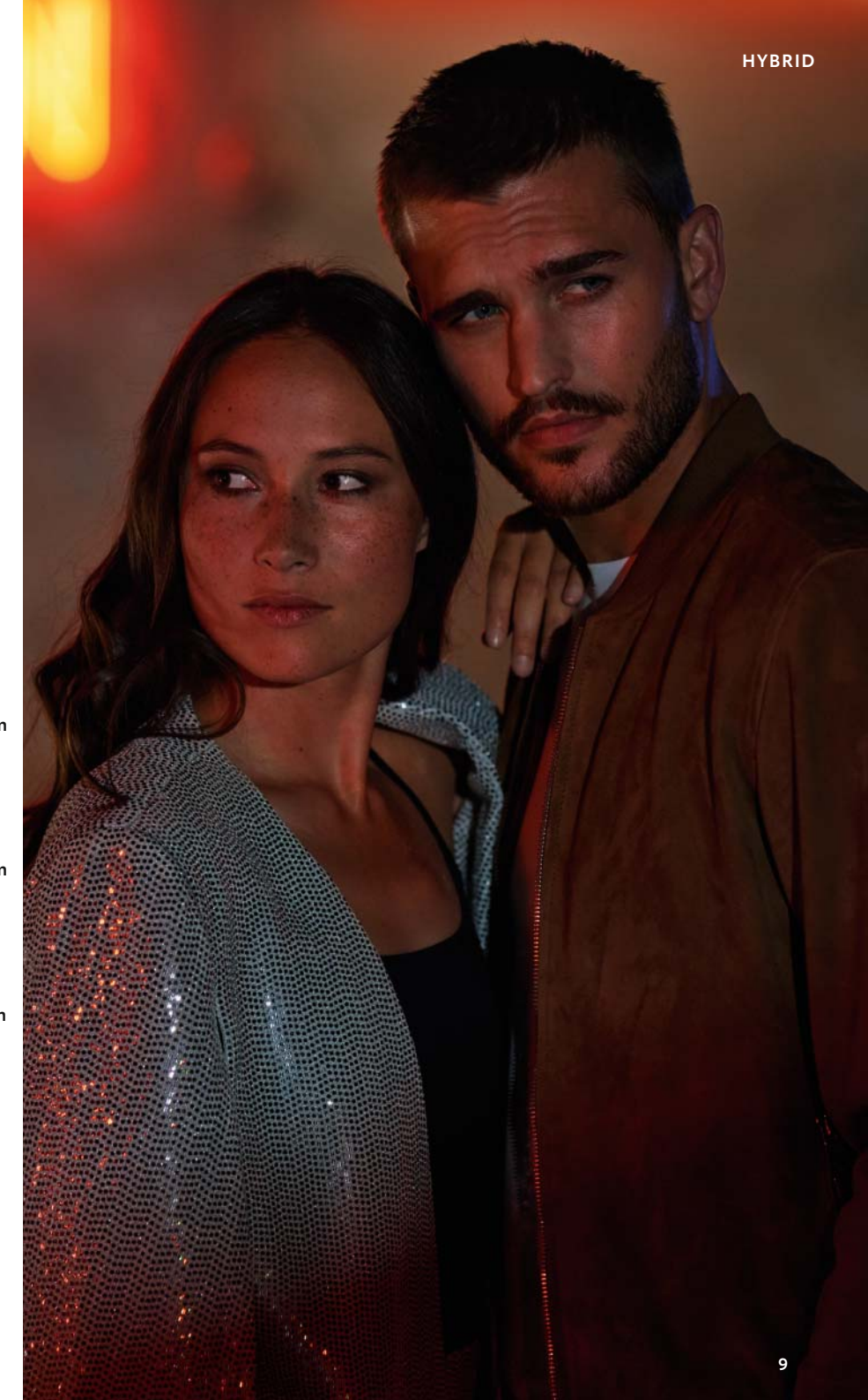
0–100 km/h **10.9 seconds**

M/T = Manual transmission

e-CVT = electronically controlled

Continuously Variable Transmission

\* Combined cycle.





# CLEAN CUT DETAILS TAKE CENTRE STAGE

You want the most out of every moment: the way you live, the way you work and the way you play. The new Toyota C-HR gets it. That's why we've designed the cabin to be enjoyed. With seats that hug your every contour and strong diamond patterns that add prestige, both comfort and style are catered for. Lining the interior are soft-touch surfaces, contrasted by gloss black inserts which add a contemporary feel. As day fades, the mood changes, and you are bathed in the soft blue glow of the ambient lighting. In the Toyota C-HR your every sense is satisfied.

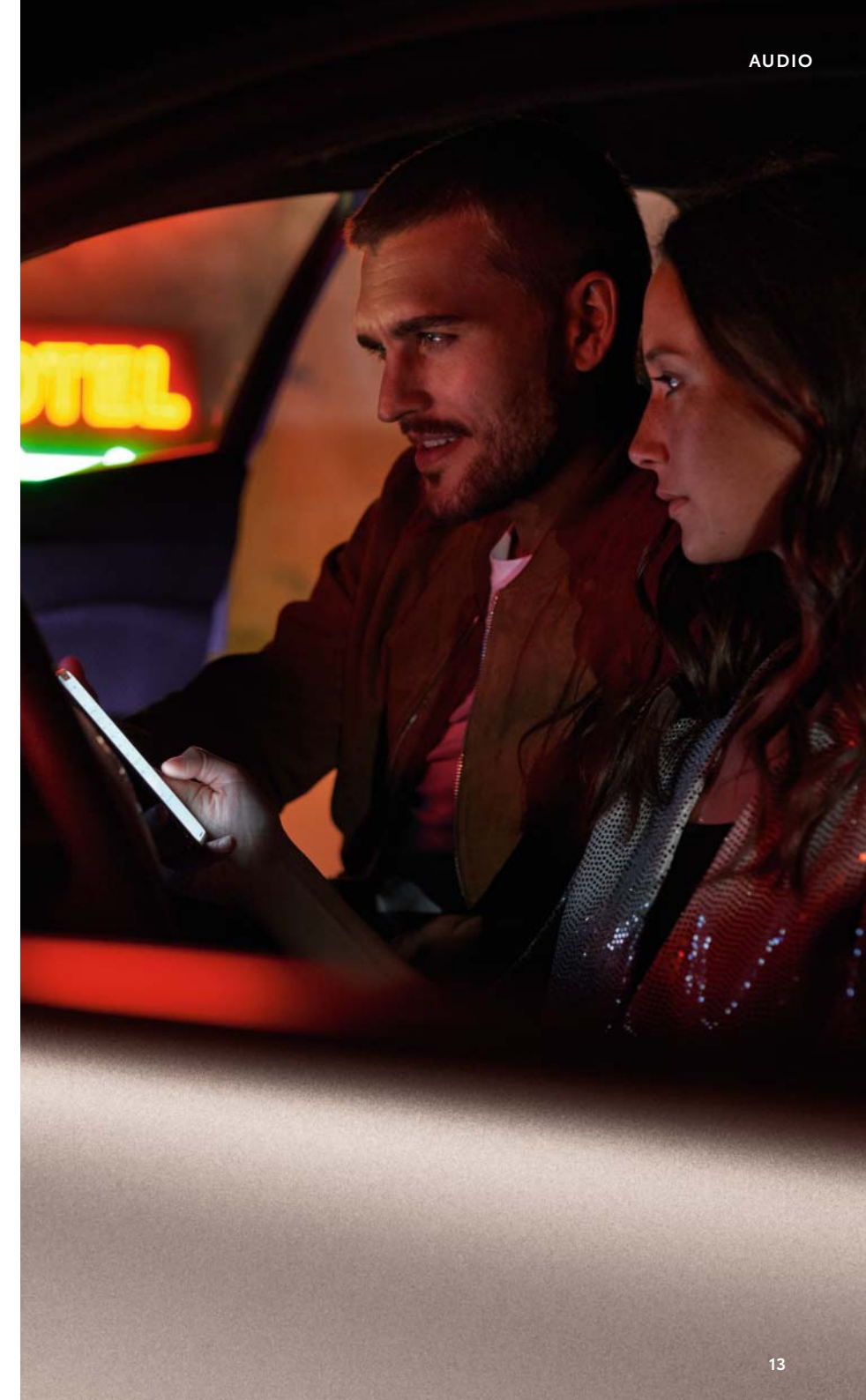




## 800 WATTS OF PASSION IMMERSE YOURSELF IN CRISP TREBLE AND RICH BASS

You move to a different beat, and you wouldn't want it any other way. That's why the bespoke JBL audio system gives you clarity like you've only experienced live – letting you take the gig wherever you go. So connect your smartphone and stream your favourite tracks for an experience that puts the artist in your car.

**Life has a soundtrack, play it loud.**





# CONNECT YOUR PHONE GET MORE FROM YOUR DRIVE

**MyT** | Connected  
Services

## LIFE HAPPENS WHEN YOU CONNECT

Intuitive technology can elevate any journey. Meet Toyota Smart Connect. Its breakthrough Premium Connectivity pack lets you enjoy seamless cloud-based navigation, Voice Agent, as well as real-time traffic information and road events. Reach every destination on time, with intelligent multimedia doing the hard work for you.

Discover more at: [www.toyota-europe.com/MyT](http://www.toyota-europe.com/MyT)



**MyT** | Multimedia

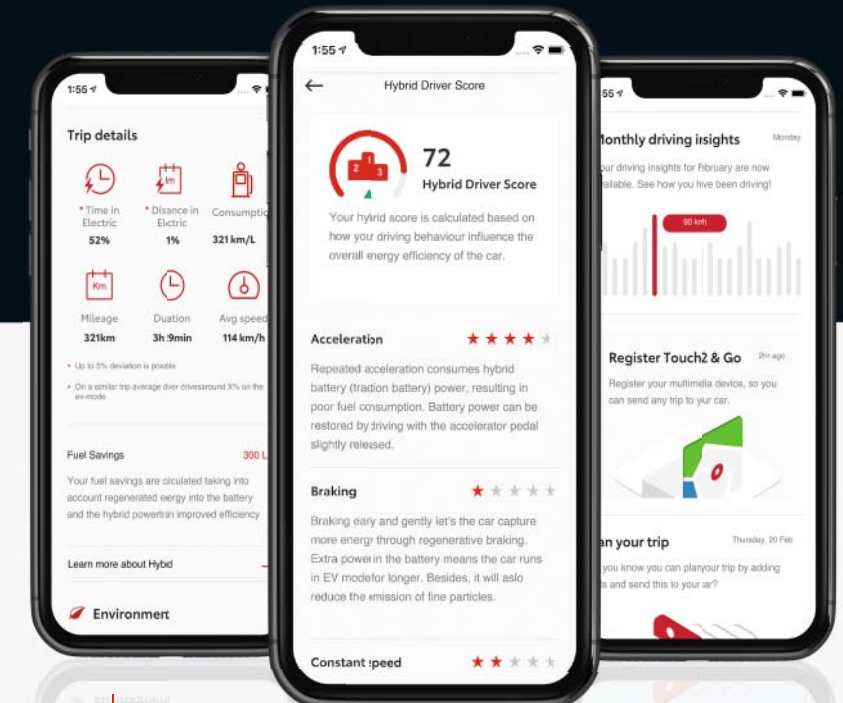
### INTUITIVE, ADVANCED AND ENTERTAINING

The new 8" touchscreen effortlessly integrates Apple CarPlay and Android Auto in your dashboard, providing access to your favourite smartphone apps as well as a wealth of driving information.

Meanwhile, MyT app takes care of everything else. Track journeys, schedule a service or even improve your hybrid driving style at the touch of a button.

Transform your every day with Toyota Smart Connect.

Apple CarPlay is a trademark of Apple Inc.



**MyT** | App

### ALWAYS CONNECTED TO YOUR TOYOTA

MyT App on your smartphone lets you communicate with your car, no matter where you are. You can plan journeys from home, locate your parked car and even receive service maintenance notifications. The Hybrid Coaching feature provides analytics on your driving style, together with useful feedback that can help increase your EV driving ratio and improve your fuel efficiency, so you can get the most from your Hybrid.

**MyT** by Toyota



# YOU DO LIFE, WE DO SAFETY

For class-leading safety, Toyota C-HR is built with T-Mate – with you for a safer journey. T-Mate is a series of systems designed to support you and make driving safer, whether you're on the motorway, in the city or parking, T-Mate makes sure you're always in safe hands.

It includes Toyota Safety Sense, that features the latest technologies designed to prevent the most common types of accident as well as other innovative features – giving you confidence and making driving and parking even safer for you and other road users.



Learn more about T-Mate.

## **Blind Spot Monitor (BSM)**

Our Blind Spot Monitor system alerts the driver to any vehicles they might not have seen in their side mirrors. This is particularly useful when overtaking.

## **Rear Cross Traffic Alert with Automatic Braking (RCTAB)**

When you're backing out of a parking space, this system will identify any vehicles approaching from the left or right, alert you to them and apply the brakes to help to avoid a collision.

## **Intelligent Clearance Sonar (ICS)**

Intelligent by name, intelligent by nature – this system warns the driver of obstacles in front of or behind the car and automatically brakes to help to avoid collision.

## **Pre-Collision System (PCS)**

Our Pre-Collision System can detect and help you avoid collisions with other vehicles, pedestrians and cyclists. It works by alerting the driver with audio and visual warnings and brake assistance. If the driver doesn't manage to brake in time the brakes automatically engage to prevent or mitigate a collision. Additionally, Intersection Collision Avoidance Support and Emergency Steering Assist support in the day when turning at junctions and making evasive manoeuvres.

## **(Full-range) Adaptive Cruise Control (ACC)**

This system keeps you at a minimum pre-set distance from the vehicle in front. If this distance falls, the system reduces your speed and eventually the brakes will be applied and brake lights activated.

Full-Range ACC can bring the vehicle to a complete stop should the preceding vehicle stop ahead. A small input on the accelerator pedal or ACC switch will re-enable the system.

If your car is equipped with Road Sign Assist (RSA), this system will also recognise speed limits on your driving route and suggest any necessary adjustments.

## **Lane Trace Assist (LTA)**

Our Lane Trace Assist System is designed to make motorway driving safer. It keeps you centred in your lane and if you start to drift from it, steering assist will gently steer your car to correct its course.

## **Automatic High Beam (AHB)**

The Automatic High Beam system looks down the road to see oncoming headlights. If it detects headlights, it automatically turns off the high beam and engages low beam. When the headlights pass, the system automatically switches to high beam again. The result? Safer night-time driving for you and other road users.







# C-ENTER

THE  
COLLECTION  
FIND THE  
MATCH THAT  
FITS YOUR LIFE

## Main features

- Available in Pure White (040), Platinum Pearl White (089), Silver Metallic (1L0), Hydro Blue (8X2), Celestite Grey (1K3), Flame Red (3U5), Night Sky Black (209) and Ash Grey (1G3) body colours
- 17" silver alloy wheels (5-double-spoke)
- Honeycomb lower front grille
- Lane Departure Alert with Steering Control
- Automatic High Beam
- Adaptive Cruise Control
- Black fabric with light grey stitching
- Toyota Touch® 2 multimedia system
- 8" multimedia display
- MyT Connected Services
- Grey deco line on upper dashboard
- Dual-zone automatic air conditioning
- Clean air filter
- Front sports seats
- 60:40 split-folding rear seats
- Hybrid System Indicator

## Optional features

- Rain sensor
- Intelligent front and rear parking sensors with automatic braking
- Rear Cross Traffic Alert (RCTA)
- Toyota Touch® 2 with Go navigation system
- Wi-Fi connectivity



GRADES



START A REVOLUTION  
AN UNAPOLOGETIC INTRODUCTION  
TO THE TOYOTA C-HR



Black fabric with light grey stitching



17" silver alloy wheels (5-double-spoke)





MAKE A STATEMENT  
SET THE STANDARD WITH PLENTY  
OF EXTRA FEATURES



Aluminium door scuff plates with diamond pattern



Black & dark grey partial synthetic leather



18" black machined-face alloy wheels (5-double-spoke)



# C-LUB

## Main features (additional to C-ENTER)

- Available in all body colours except Pure White (040)
- 18" black machined-face alloy wheels (5-double-spoke)
- Privacy glass on rear windows
- Adaptive Front light System (AFS)
- Rear bumper with chrome plated inserts
- Smart Entry & Start System
- Rain sensor
- Intelligent front and rear parking sensors with automatic braking
- Simple Intelligent Parking Assist (Simple IPA)
- Blind Spot Monitor (BSM)
- Rear Cross Traffic Alert (RCTA)
- Toyota Smart Connect
- Black & dark grey partial synthetic leather
- Gun metal deco line on upper dashboard
- Light blue ambient lighting on front cup holders
- Light blue ambient lighting on front doors
- Electrochromatic rear-view mirror
- Heated driver & front passenger seats
- Full-flat loading
- Aluminium door scuff plates with diamond pattern

## Optional features

- Front fog lamps (LED type)
- Wi-Fi connectivity





#### Main features (additional to C-LUB)

- Available in Night Sky Black (209), Ash Grey (1G3), Ash Grey with black roof (2NB), Deep Amethyst with black roof (2XE), and Shimmering Silver with black roof (2VU), Pearl White (070), body colours
- 18" dark chrome alloy wheels (10-double-spoke)
- Star-shaped black large centre caps
- Automatic headlamp levelling
- Front fog lamps (LED type)
- Orchid and black leather with black headliner
- Toyota Smart Connect
- 9 speakers
- JBL premium sound system
- Voice recognition
- Wi-Fi connectivity
- Dark brown upper dashboard
- Soft-touch texture on upper dashboard
- Silver deco line on upper dashboard

#### Optional features

- Black perforated leather with diamond pattern



COMPROMISE IS NOT YOUR STYLE  
NEXT LEVEL LUXURY THAT  
COMES AS STANDARD



Orchid leather seat with black  
perforated leather insert



18" dark chrome alloy wheels  
(10-double-spoke)





# GR SPORT

## Main features (additional to C-LUB)

- Available in Pure White with black roof (2MQ) and Dynamic Grey with black roof (2VF)
- 19" black machined-face alloy wheels (5-double-spoke)
- Honeycomb lower front grille and Piano black upper front grille
- Piano black front spoiler
- Piano black front fog lamp covers
- Darkened headlamps
- Piano black door belt moulding
- Piano black wheel arch moulding
- Piano black insert on lower side doors
- Black Alcantara® with black leather bolsters and silver & red stitching
- Black fabric with black headliner
- GR SPORT badge on boot door
- Cool silver deco line on upper dashboard
- Red stitching on steering wheel
- Toyota Smart Connect



STAND OUT  
WITH SPORTY, REFINED STYLE



Black Alcantara® with black leather bolsters and silver & red stitching



19" black machined-face alloy wheels (5-double-spoke)



SUV ATTITUDE  
ENHANCE  
YOUR URBAN  
CREDIBILITY



## UNDERRUN – FRONT, SIDE AND REAR

Always stylish, no matter how minor the detail. Take the underrun protectors for example, an ideal combination of protection and style. They preserve the premium look by protecting the front, side and rear areas that are vulnerable to getting scratched.



## CHROME ELEMENTS

Eye-catching chrome detailing added to your front fog lamps.

Contoured chrome side sills that integrate smoothly with the side of your car, creating a powerful low profile.

The rear chrome garnish adds a subtle touch of pure sophistication.





MIX IT UP,  
BE BOLD



1K3 Celestite Grey\*

785 Midnight Teal\*

040 Pure White

089 Platinum Pearl White<sup>s</sup>

3U5 Flame Red\*

9AH Deep Amethyst\*

209 Night Sky Black\*

1G3 Ash Grey\*

1L0 Shimmering Silver\*

CHANGE  
PERSPECTIVE,  
BE DISTINCT



1



4



7



10



2



5



8



11



3



6



9



12

- 1. 2MQ Pure White with black roof
- 2. 2NB Ash Grey\* with black roof
- 3. 2TB Flame Red\* with black roof
- 4. 2TH Celestite Grey\* with black roof

\* Metallic paint.

<sup>s</sup> Pearlescent paint.

- 5. 2VF Dynamic Grey\* with black roof
- 6. 2VP Platinum Pearl White<sup>s</sup> with black roof
- 7. 2VU Shimmering Silver\* with black roof
- 8. 2XE Deep Amethyst\* with black roof

- 9. 2XF Deep Amethyst\* with silver roof
- 10. 2XG Celestite Grey\* with silver roof
- 11. 2XH Night Sky Black\* with silver roof
- 12. 2YB Midnight Teal\* with black roof

For grade availability please refer to pages 18–25.



## IT'S THE DETAILS THAT COUNT



1. 17" silver alloy wheels (5-double-spoke) Standard on C-ENTER
2. 18" black machined-face alloy wheels (5-double-spoke) Standard on C-LUB
3. 18" dark chrome alloy wheels (10-double-spoke) Standard on C-HIC
4. 18" matt black alloy wheels (10-double-spoke) Optional on C-HIC
5. 17" black machined-face alloy wheels (5-double-spoke) Optional on GR SPORT
6. 19" black machined-face alloy wheels (5-double-spoke) Standard on GR SPORT



1. Black fabric with light grey stitching Standard on C-ENTER
2. Black & dark grey partial synthetic leather Standard on C-LUB
3. Orchid quilted fabric with leather inserts Standard on C-HIC
4. Brown and black leather Standard on C-HIC
5. Black perforated leather with diamond pattern Optional on C-HIC
6. Black Alcantara® with black leather bolsters and silver & red stitching Standard on GR SPORT
7. Black fabric with silver & red stitching Optional on GR SPORT



ENVIRONMENTAL PERFORMANCE	Hybrid	Hybrid	Petrol
	2.0 l Petrol Hybrid e-CVT	1.8 l Petrol Hybrid e-CVT	1.2 l Turbo Petrol 6 M/T
Fuel consumption (regulation EC 2017/1153 as amended EC 2017/1231)			
Combined speeds (l/100km)	5.2-5.7	4.8-5.2	6.8-7.1
Low speed (l/100km)	4.8-5.3	4.0-4.4	8.7-9.1
Medium speed (l/100km)	4.3-4.8	3.8-4.2	6.7-7.0
High speed (l/100km)	4.7-5.0	4.3-4.7	5.8-6.1
Extra high speed (l/100km)	6.4-6.8	6.1-6.5	7.0-7.3
Recommended fuel grade	95 or higher	95 or higher	95 or higher
Fuel tank capacity (litres)	43	43	50
Carbon dioxide, CO <sub>2</sub> (regulation EC 2017/1153 as amended EC 2017/1231)			
Combined speeds (g/km)	119-128	109-118	154-161
Low speed (g/km)	109-120	91-101	196-205
Medium speed (g/km)	98-108	87-95	152-158
High speed (g/km)	105-113	97-106	132-137
Extra high speed (g/km)	146-155	139-147	159-166
Exhaust emissions (regulation EC 715/2007 complemented by EC 2018/1832AP)			
Euro class	EURO 6 AP	EURO 6 AM	EURO 6 DG
Carbon monoxide, CO (mg/km)	190.5	69.8	153.8
Hydrocarbons, THC (mg/km)	19.9	11.0	15.4
Hydrocarbons, NMHC (mg/km)	17.2	8.7	12.5
Nitrogen Oxides, NOx (mg/km)	4.9	3.6	22.6
Smoke particulates (mg/km)			0.177
Sound level drive by (dB(A))	65.0	66.7	69.0

The fuel consumption and CO<sub>2</sub> values are measured in a controlled environment on a representative production model, in accordance with the requirements of the new WLTP European Regulation EC 2017/1151 and its applicable amendments. For each individual vehicle configuration, the final fuel consumption and CO<sub>2</sub> values may be calculated based on the ordered optional equipment. The fuel consumption and CO<sub>2</sub> values of your vehicle may vary from those measured or calculated values, as driving behaviour as well as other factors (such as road conditions, traffic, vehicle condition, tyre pressure, load, number of passengers, etc.) have an influence on a car's fuel consumption and CO<sub>2</sub> emissions. For more information regarding the new WLTP test method, please visit: <https://www.toyota-europe.com/world-of-toyota/feel/environment/worldwide-harmonized-light>

PERFORMANCE

Maximum speed (km/h)	180	170	190
0–100 km/h (secs)	8.2	11.0	10.9
Drag coefficient	0.32	0.32	0.33

ENGINE	Hybrid	Hybrid	Petrol
	2.0 l Petrol Hybrid e-CVT	1.8 l Petrol Hybrid e-CVT	1.2 l Turbo Petrol 6 M/T
Engine code	M20A-FXS	2ZR-FXE	8NR-FTS
Number of cylinders	4, in line	4, in line	4, in line
Valve mechanism	16-valve DOHC, chain drive (with VVT-iE and VVT-i)	16 valve DOHC, chain drive (with VVT-i)	16-valve DOHC, chain drive (with VVT-iW and VVT-i)
Fuel system	SFI	SFI	SFI
Displacement (cc)	1987	1798	1197
Bore x stroke (mm x mm)	80.5 x 97.6	80.5 x 88.3	71.5 x 74.5
Compression ratio	14.0:1	13.0:1	10.0:1
Maximum power output (DIN hp)	152	98	116
Maximum power output (kW/rpm)	112/6000	72/5200	85/5200
Maximum torque (Nm/rpm)	190/4400-5200	142/3600	185/1500-4000
Total hybrid system combined output (DIN hp)	184	122	–
Total hybrid system combined output (kW)	135	90	–

2.0 L PETROL HYBRID E-CVT  
ELECTRIC FRONT MOTOR

HYBRID VEHICLE BATTERY

Type	Permanent magnet motor	Type	Nickel metal hydride
Maximum output (kW)	80	Nominal voltage (V)	216.0
Maximum torque (Nm)	202	Number of battery modules	180
Maximum voltage (V)	650	Battery capacity (3 hr) amp. hr.	6.5

1.8 L PETROL HYBRID E-CVT  
ELECTRIC FRONT MOTOR

HYBRID VEHICLE BATTERY

Type	Permanent magnet motor	Type	Lithium-ion
Maximum output (kW)	53	Nominal voltage (V)	207.2
Maximum torque (Nm)	163	Number of battery modules	56
Maximum voltage (V)	600	Battery capacity (3 hr) amp. hr.	3.6

e-CVT = electronically controlled Continuously Variable Transmission      M/T = Manual transmission



WEIGHTS & TOWING CAPACITY	Hybrid	Hybrid	Petrol	
	2.0 L Petrol Hybrid e-CVT	1.8 L Petrol Hybrid e-CVT	1.2 L Turbo Petrol 6 M/T	
	Total gross vehicle mass (kg)	2655	2585	3145
	Kerb weight (kg)	1485-1525	1420-1460	1375-1435
	Towing capacity with brakes (kg)	725	725	1300
Towing capacity without brakes (kg)	725	725	720	

SUSPENSION

Front	MacPherson strut	MacPherson strut	MacPherson strut
Rear	Double wishbone	Double wishbone	Double wishbone

BRAKES

Front	Ventilated disc	Ventilated disc	Ventilated disc
Rear	Disc	Disc	Disc

EXTERIOR DIMENSIONS

5-door	
Exterior length (mm)	4390 / 4395*
Exterior width (mm)	1795
Exterior height (mm)	1555 / 1565*
Front tread (mm)	1540° / 1550
Rear tread (mm)	1550° / 1560
Front overhang (mm)	935
Rear overhang (mm)	815 / 820*
Wheelbase (mm)	2640

INTERIOR DIMENSIONS

Interior length (mm)	1800	1800	1800
Interior width (mm)	1455	1455	1455
Interior height (mm)	1210	1210	1210

LOAD VOLUME

5-door	
Luggage capacity (5 seats up; up to belt line) (litres)	358* / 377
Luggage capacity (2 seats up; up to roof) (litres)	1102* / 1164

STEERING

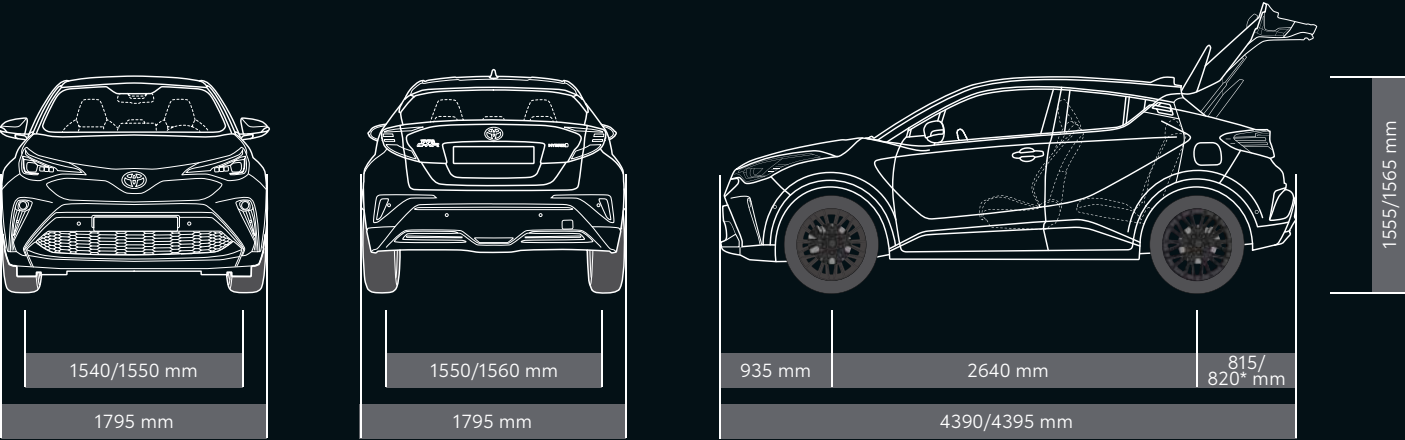
Turning circle – tyre (m)	10.4
---------------------------	------

WHEELS

	Hybrid C-ENTER	Hybrid C-LUB	Hybrid C-HIC	Hybrid GR SPORT	C-ENTER	C-LUB
17" silver alloy wheels (5-double-spoke)	●	–	–	–	●	–
18" black machined-face alloy wheels (5-double-spoke)	–	●	–	–	–	●
18" dark chrome alloy wheels (10-double-spoke)	–	–	●	●	–	–
18" matt black alloy wheels (10-double-spoke)	–	–	○	–	–	–
17" black machined-face alloy wheels (5-double-spoke)	–	–	–	●	–	–
19" black machined-face alloy wheels (5-double-spoke)	–	–	–	●	–	–
Star-shaped black large centre caps	–	–	●	●	–	–
Silver large centre cap surrounds	●	●	–	–	●	●
Tyre repair kit	●	●	●	●	●	●

● = Standard      ○ = Optional      – = Not available  
e-CVT = electronically controlled Continuously Variable Transmission  
\* 2.0 l Petrol Hybrid.      § 1.2 l Turbo Petrol.      ° with 18" wheels.

M/T = Manual transmission





## EQUIPMENT

● = Standard      ○ = Optional      – = Not Available      \* Xxxxxxx xxxxxxxx xxxxx.





TOYOTA 2050  
ENVIRONMENTAL  
CHALLENGE &  
EFFICIENCY AND  
LOW EMISSIONS.

At Toyota, we want to go beyond zero environmental impact and leave the world in a better place than we found it. To make that happen, we have set ourselves six challenges to complete by 2050. Each one throws up its own difficulties, but we are committed to generating a positive and sustainable impact on society and the natural world as a whole.

For more information regarding Toyota Environmental Challenge please visit:  
<https://www.toyota-europe.com/world-of-toyota/feel/environmental-sustainability>  
or contact your local Toyota retailer.



CHALLENGE 1  
NEW VEHICLE ZERO CO<sub>2</sub>  
EMISSIONS

By 2050, we want to reduce the CO<sub>2</sub> emissions from our vehicles by 90% compared to our 2010 levels. To achieve this, we will promote the development of new vehicles with low or zero carbon emissions, and do everything we can to increase the uptake of these vehicles.



CHALLENGE 2  
LIFE CYCLE ZERO CO<sub>2</sub>  
EMISSIONS

We are working to create more environmentally friendly designs – and then analysing and refining them to ensure the lowest possible environmental impact throughout the vehicle's entire life cycle\*.



CHALLENGE 3  
PLANT ZERO CO<sub>2</sub> EMISSIONS

To reduce carbon emissions at our manufacturing plants, we are focusing on improving the technologies we use and switching to alternative power sources. We are committed to making our facilities more energy-efficient and adopting renewable energy sources such as solar and wind, as well as low-carbon power such as hydrogen energy.



CHALLENGE 4  
MINIMISING AND OPTIMISING  
WATER USAGE

To minimise water usage we have started to collect rainwater at our manufacturing plants. We have also developed purification methods so that the water we do use can either be used again or returned safely into the local supply.



CHALLENGE 5  
ESTABLISHING A RECYCLING-  
BASED SOCIETY AND SYSTEMS

We've been working on the challenge of resource recycling for 40 years, with the result that 95% of every Toyota C-HR is now reusable and recoverable. In addition, we offer new and innovative ways of returning your vehicle when it eventually reaches 'the end of the road'.



CHALLENGE 6  
ESTABLISHING A FUTURE  
SOCIETY IN HARMONY  
WITH NATURE

To preserve and enhance our co-existence with the natural world, we are organising reforestation and tree planting, green urban schemes and other environmental initiatives, both at our own sites and in the wider world. Our aim is to establish a society where people and nature coexist in harmony.



\* Toyota's LCA methodology, which is applied to our passenger vehicles, was reviewed and approved by TÜV Rheinland and has been certified to comply with ISO14040/14044 standards.



The Toyota C-HR is built to the highest quality standards at TMMT in Sakarya, Turkey.





# YOUR COMPLETE PEACE OF MIND WITH TOYOTA

## HYBRID SERVICE PROGRAMME

Hybrid Battery Extra Care cover\* on an annual/15,000 km basis (whichever comes sooner) up to the 10th year from vehicle registration date.

## QUALITY SERVICE

Your Toyota will need a Health & Safety check at least once every 2 years/30,000 km (whichever comes sooner). An intermediate check is necessary every year or 15,000 km.

## LOW MAINTENANCE COSTS

All Toyota vehicles are designed and engineered to minimise your maintenance costs.

## GENUINE PARTS

Providing the reassurance of Toyota quality, only genuine and approved components are used on your vehicle.

## COMPREHENSIVE WARRANTY

Every new Toyota comes with a 3-year/100,000 km vehicle warranty<sup>§</sup>, which covers any defect caused by a manufacturing fault<sup>§</sup>.

## ADDED SECURITY

Toyota's comprehensive security system withstands the insurance industry's rigorous 5-minute attack test.

## TOYOTA EURO CARE

Enjoy peace of mind driving with complimentary Toyota Eurocare roadside assistance in 40 European countries for 3 years\*\*.

## GENUINE ACCESSORIES

Toyota accessories are designed and manufactured with the same care, quality and attention to detail as Toyota vehicles. All accessories are covered by a 3-year warranty when purchased together with the vehicle<sup>§</sup>.

For more information on peace of mind visit: [www.toyota-europe.com/service-and-accessories](http://www.toyota-europe.com/service-and-accessories)

\* Check with your retailer for specific Toyota Hybrid Service Programme details. <sup>§</sup> Check with your retailer for specific warranty details. <sup>§</sup> Transport to the nearest authorised Toyota repairer will also be covered. In addition the 3-year/unlimited mileage paint warranty protects against defects and surface rust caused by a manufacturing fault. Every new Toyota is covered by a 12-year anti-corrosion (not valid for commercial vehicles) warranty against perforation of body panels caused by a manufacturing fault in materials or workmanship. \*\* Belgium 5 years/Portugal and Denmark 1 year.



# TOYOTA 2050 ENVIRONMENTAL CHALLENGE & EFFICIENCY AND LOW EMISSIONS



At Toyota, we want to go beyond zero environmental impact and leave the world in a better place than we found it. To make that happen, we have set ourselves six challenges to complete by 2050. Each one throws up its own difficulties, but we are committed to generating a positive and sustainable impact on society and the natural world as a whole.



## CHALLENGE 1 NEW VEHICLE ZERO CO<sub>2</sub> EMISSIONS

By 2050, we want to reduce the CO<sub>2</sub> emissions from our vehicles by 90% compared to our 2010 levels. To achieve this, we will promote the development of new vehicles with low or zero carbon emissions, and do everything we can to increase the uptake of these vehicles.



## CHALLENGE 2 LIFE CYCLE ZERO CO<sub>2</sub> EMISSIONS

We are working to create more environmentally friendly designs – and then analysing and refining them to ensure the lowest possible environmental impact throughout the vehicle’s entire life cycle\*.



## CHALLENGE 3 PLANT ZERO CO<sub>2</sub> EMISSIONS

To reduce carbon emissions at our manufacturing plants, we are focusing on improving the technologies we use and switching to alternative power sources. We are committed to making our facilities more energy-efficient and adopting renewable energy sources such as solar and wind, as well as low-carbon power such as hydrogen energy.



## CHALLENGE 4 MINIMISING AND OPTIMISING WATER USAGE

To minimise water usage we have started to collect rainwater at our manufacturing plants. We have also developed purification methods so that the water we do use can either be used again or returned safely into the local supply.



## CHALLENGE 5 ESTABLISHING A RECYCLING-BASED SOCIETY AND SYSTEMS

We’ve been working on the challenge of resource recycling for 40 years, with the result that 95% of every Toyota C-HR is now reusable and recoverable. In addition, we offer new and innovative ways of returning your vehicle when it eventually reaches ‘the end of the road’.



## CHALLENGE 6 ESTABLISHING A FUTURE SOCIETY IN HARMONY WITH NATURE

To preserve and enhance our co-existence with the natural world, we are organising reforestation and tree planting, green urban schemes and other environmental initiatives, both at our own sites and in the wider world. Our aim is to establish a society where people and nature coexist in harmony.

For more information regarding Toyota Environmental Challenge please visit:  
<https://www.toyota-europe.com/world-of-toyota/feel/environmental-sustainability>  
or contact your local Toyota retailer.



\* Toyota’s LCA methodology, which is applied to our passenger vehicles, was reviewed and approved by TÜV Rheinland and has been certified to comply with ISO14040/14044 standards.



The Toyota C-HR is built to the highest quality standards at TMMT in Sakarya, Turkey.

# YOUR COMPLETE PEACE OF MIND WITH TOYOTA

**HYBRID SERVICE PROGRAMME**  
Hybrid Battery Extra Care cover\* on an annual/15,000 km basis (whichever comes sooner) up to the 10th year from vehicle registration date.

**QUALITY SERVICE**  
Your Toyota will need a Health & Safety check at least once every 2 years/30,000 km (whichever comes sooner). An intermediate check is necessary every year or 15,000 km.

**LOW MAINTENANCE COSTS**  
All Toyota vehicles are designed and engineered to minimise your maintenance costs.

**GENUINE PARTS**  
Providing the reassurance of Toyota quality, only genuine and approved components are used on your vehicle.

**COMPREHENSIVE WARRANTY**  
Every new Toyota comes with a 3-year/100,000 km vehicle warranty<sup>§</sup>, which covers any defect caused by a manufacturing fault<sup>§</sup>.

**ADDED SECURITY**  
Toyota’s comprehensive security system withstands the insurance industry’s rigorous 5-minute attack test.

**TOYOTA EUROCARE**  
Enjoy peace of mind driving with complimentary Toyota Eurocare roadside assistance in 40 European countries for 3 years\*\*.

**GENUINE ACCESSORIES**  
Toyota accessories are designed and manufactured with the same care, quality and attention to detail as Toyota vehicles. All accessories are covered by a 3-year warranty when purchased together with the vehicle<sup>§</sup>.

For more information on peace of mind visit:  
[www.toyota-europe.com/service-and-accessories](http://www.toyota-europe.com/service-and-accessories)

\* Check with your retailer for specific Toyota Hybrid Service Programme details. <sup>§</sup> Check with your retailer for specific warranty details. <sup>§</sup> Transport to the nearest authorised Toyota repairer will also be covered. In addition the 3-year/unlimited mileage paint warranty protects against defects and surface rust caused by a manufacturing fault. Every new Toyota is covered by a 12-year anti-corrosion (not valid for commercial vehicles) warranty against perforation of body panels caused by a manufacturing fault in materials or workmanship. \*\* Belgium 5 years/Portugal and Denmark 1 year.





# THE NEW TOYOTA C-HR HYBRID

## LEAVE ORDINARY BEHIND

[www.toyota-europe.com](http://www.toyota-europe.com)

To the best of our knowledge, all information in this brochure is correct at time of going to print. Details of specifications and equipment provided in this brochure are subject to local conditions and requirements and may, therefore, vary from models available in your area. Please enquire with your local retailer for details on your local specifications and equipment. • Vehicle body colours may differ slightly from the printed photographs in this brochure. • Toyota Motor Europe reserves the right to alter any details of specifications and equipment without prior notice. • © 2022 by Toyota Motor Europe NV/SA ('TME'). • No part of this publication may in any way be reproduced without the prior written approval of Toyota Motor Europe.